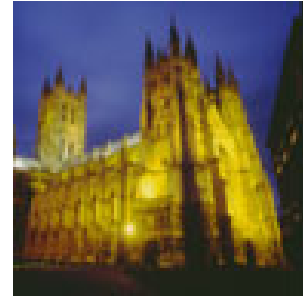


University of Kent at Canterbury

Key Facts

- The University of Kent (UKC) was granted its Royal Charter in 1965.
- The main campus covers 300 acres, just over a mile from Canterbury City Centre.
- There are over 13,000 students including over 7,000 full time undergraduates, just under 1,000 full time postgraduates and nearly 4,000 other students.
- 11.3% of students are from overseas.
- UKC also has centres in Medway (University of Kent at Medway), Tonbridge, London and Brussels and Paris
- UKC is in the 'Top Ten Best for Jobs' category according to the 2003 Sunday Times University Guide.
- The Government's highest score for Research - 5* - was awarded to the Statistics and operational research and Social policy and administration Units.
- A £5.5million Innovation Centre has been developed on Canterbury campus which offers a friendly ear and support to those just starting out in the business world



Location and facilities

The main campus is close to Canterbury City Centre. All the facilities expected of a major university are on hand and the cultural facilities both at the campus and within the town, are a particular strength. The majority of students (over 10,000) are based at Canterbury, with other students being based at campuses and associate colleges in Medway, Tonbridge, Ashford, London, Brussels and Paris.

The **Universities at Medway** is a growing alliance between Kent and Greenwich Universities which has resulted in a major and growing campus at Chatham Maritime. The University of Kent's Bridgewardens College offers mainly business-related courses.

- **Canterbury:** A vibrant, exciting and friendly campus with an excellent social life and superb sports facilities. Within walking distance of the City, it offers green and tranquil open spaces, lively cafes and bars and a cosmopolitan atmosphere.
- **Medway:** A brand-new campus with award-winning buildings, first-class cafes, its own pub and a great sense of community. A great location near the riverside.
- **Brussels:** Excellent new city-centre premises at the heart of Europe, reflecting the innovative nature of the University's activities in Europe. These include the University of the Transmanche, the world's only Franco-British higher education institution led by Kent in partnership with the universities of Lille 1, 2 and 3 and the L'Universite du Littoral Cote d'Opale.
- The University has other campuses and associate colleges based in Tonbridge, Ashford, London and Paris.

Faculties and departments

There are 21 academic Schools

	Students
Humanities School of Drama, Film & Visual Arts; School of English; School of European Culture and Languages; School of History, Kent School of Architecture	5,255
Science, Technology and Medical Studies School of Biosciences; School Computing; School of Engineering and Digital Arts; School of Mathematics and Actuarial Science; Medway School of Pharmacy; School of Physical Sciences	3,005
Social Sciences School of Anthropology and Conservation; Kent Business School; School of Economics; Kent Law School; Centre for Journalism; School of Politics and International Relations; School of Psychology; ~School of Social Policy, Sociology and Social Research; Centre for Sports Studies.	7,260
Other	2,650
Total	18,165

Student facts and figures

Country of origin

- Approximately 11.3% of students are from overseas
- More than 900 full time students are from EU countries, primarily France, Germany, Greece and Spain. They are mainly undergraduates and are a good source of language skills.
- About 25% are international students.

Student numbers – trends

- The number of undergraduates of all types is growing although part-time UK students levelled out in 2002-3. Between 1987/8 and 2002/3 the total number of undergraduates grew from 3,800 to 11,400 but recently, the number has increased to 13,000
- The total number of postgraduates is also growing. Although the number of UK postgraduate taught students decreased, the number of such students from overseas has doubled over the years and there are now over 2000 postgraduate students
- The number of non-UK EU undergraduates is growing and the number of non-EU postgraduates is growing rapidly.
- The total number of full and part time students has recently grown to a total of 18,165

Graduates

It is estimated that in 2006-7 there were 4,510 graduates from the university.

Department Highlights

- The Canterbury Business School accounts for 1,732 students and 31% of full time overseas students. The Kent Law School accounts for 15% of such students.
- The School of Bioscience has over 300 students including more than 40 postgraduate researchers.
- The Computing Laboratory accounts for 783 students.
- The School of Physical Sciences has 312 students.
- The Department of Electronics has 740 students, including over 40 postgraduate researchers.
- The School of European Culture and Languages has nearly 1,300 students.
- Other notable numbers of students include those studying drama, film and visual arts, psychology, social policy and social research.
- The number of students at The University of Kent at Medway grew by 17% this year to over 1,000.
- A new School of Pharmacy - jointly run with the University of Greenwich - opened in September 2004. Working with Pfizer and The Co-op, it is the first new School of Pharmacy for 20 years.

Research

The University has a research turnover of £15m a year, and undertakes a wide range of research and consultancy projects on behalf of business and industry. Internationally recognised research strengths are in many areas that can support innovation, competitiveness and the growth of a knowledge-based economy. These include ICT, electronic engineering, biotechnology, statistics, social policy, economics, business and law.

The Government's top scores for university research are 5 and 5*. In 2001 the former was awarded to Anthropology, Applied Mathematics, Law, English and Drama, Dance and Performing Arts Units. The highest score, 5* was awarded to Statistics and operational research and Social policy and administration Units.

Research clients have included BAE Avionics, BBC, BICC, BNFL, Dow Corning, Glaxo-Wellcome, Home Office, Kent Police, Natwest plc, Nortel Networks, Pfizer and Unilever.

Research highlights include:

Bioscience:	Dr Phil Blower is jointly appointed by the Department and the NHS to work on imaging cancer and radiotherapy.
Computer Science:	Leading industrial consultant, Lee Hatton, has been appointed Professor of Software Reliability. Dr Stuart Kent has been awarded a Royal Society Fellowship into e-business systems along with IBM.
Electronic Engineering:	The Image Processing and Vision Group is part of an EU funded consortium researching the automatic processing of cheques and associated documents.
Healthcare:	Professor Mike Tuite, Head of the Department of Biosciences, has received two grants, totalling £340,000 from the Technology and Biological Sciences Research Council for research into CJD.
Physical sciences and instrumentation:	Professor Robert Newport has been given a grant of £842,000 to build and operate TOSCA, a powerful spectrometer.
Kent Business School	The centre for value chain research (VCR) led by professor Andrew Fearn (Kent Business School) has received a third year's funding from Defra under the Agricultural Development Scheme (ADS) which would help small farmers and small scale producers improve the

sustainability of their business.

Health

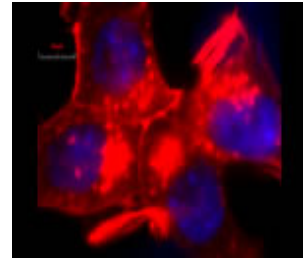
The University of Kent has led a successful bid for £100,000 worth of funding to improve health and wellbeing in the Swale district. The University would be working along side various community partners in a far reaching project to promote physical exercise and increase awareness about how it can improve the quality of life while reducing the chances of illness or disease.

Also, the University welcomed the news that it has been jointly awarded £311,563 under the government's Economic Challenge Investment Fund.

Links with business

As well as clients of research projects, links with business include:

- A new Masters degree in e-business backed by Abbey National, Accenture, HSBC, Marks & Spencer and Norwich Union.
- The Computing Laboratory has close links with Sun Microsystems and the University has Authorised Academic Java Campus status and is a Sun Target University. 26 students from the laboratory were given Sun work placements in 2001/2 and six were recruited to Sun posts.
- The laboratory also has links with Alenia Marconi, BA, BAE, Credit Suisse First Boston, IBM, ICL, Logica, Microsoft, NAG, Nortel and Philips.
- UKC provides a wide range of Continuing Professional Development, especially through the Business School and schools of Computer Science, Electronics and Communications Technology, Healthcare and Social Care.
- A South East England Development Agency sponsored Enterprise Hub and Innovation Centre will soon be set up at UKC. The Enterprise Hub will provide business support and cost-effective flexible workspace and access to the University's intellectual property with commercial potential. It is expected that the first phase will be complete in 2008, with all facilities and support fully operational by 2010.
- A sustainable relationship is being built between The University of Kent and Unilever, in Particular within the IT function.
- As part of a partnership led by Canterbury Christ Church University, Kent would be working with the Universities of Greenwich and the Creative Arts to address immediate economic challenges through rapid placement of graduates with businesses in Kent and Medway.



The University is committed to working in partnerships with organisations to improve their performance through innovation and knowledge. For further information please contact.

Kent Enterprise on 01227 8827376 email enterprise@kent.ac.uk or visit the website at www.kent.ac.uk/enterprise